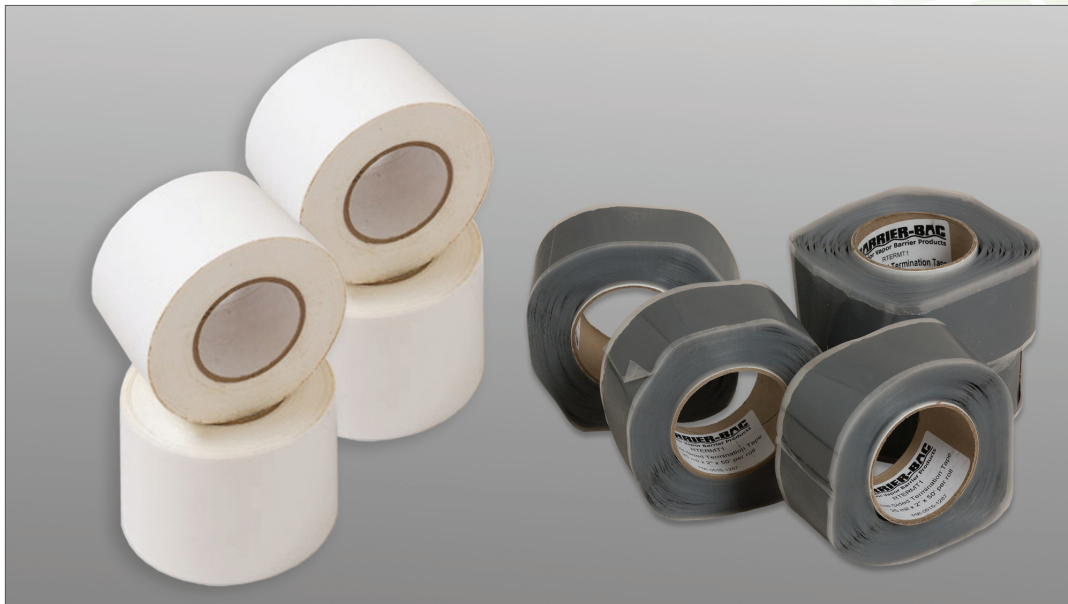


Self-adhesive tapes are used to install Barrier-Bac vapor barriers by sealing the laps of vapor barrier sheets. Barrier-Bac has two (2) types of tape to meet the various requirements of different jobs.



White Bond Tape

Barrier-Bac White Bond Tape is a smooth-surface, 9-mil tape. Its adhesive is made with a synthetic rubber compound which provides excellent bonding in low temperature applications. With easy-tear edge and no release paper, this tape is easy to use on the job site.

Double-Sided Termination Tape

Barrier-Bac Double-Sided Termination Tape is a double-sided adhesive tape. This tape is a 25-mil, high performance, pressure sensitive tape. It's adhesive is made from a blend of synthetic resins, thermoplastics and rubber. It has a transparent plastic release paper.

Application & Installation



White Bond Tape

This smooth-surface tape is used to join seams/joints, seal penetrations and repair damage of Barrier-Bac vapor barrier VB-250, VB-350, and VBC-350.

Double-Sided Termination Tape

It is used to terminate Barrier-Bac vapor barrier VB-250/VB-350 sheets. It is also used to tape VBC-350 composite vapor barrier from the inside to get 100% Peel Adhesion strength against concrete, as well as, hide the tape from being seen from outside.

	White Bond Tape	Double-Sided Termination Tape
Thickness (mil)	9	25
Dimension	4" x 150' (96mm x 45.7M)	2" x 50'
Packaging Availability	12 rolls per carton 27 cartons per pallet 324 rolls per pallet	16 rolls per carton 48 cartons per pallet 768 rolls per pallet
Color	White	Gray



INTEPLAST GROUP

OFFICE: 9 Peach Tree Hill Rd., Livingston, NJ
07039

TEL: 877-535-0555
FAX: 800-709-6002
E-MAIL: info@BarrierBac.com
WEB SITE: www.BarrierBac.com